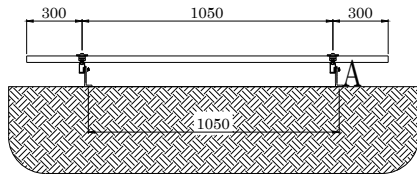
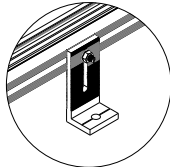


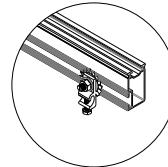
SISTEMA DE MONTAJE DE 10 PANELES A 0° 60 CELDAS



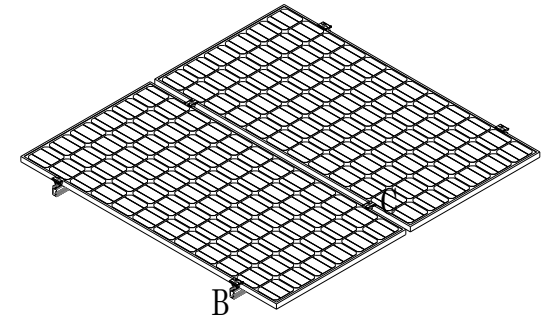
VISTA LATERAL



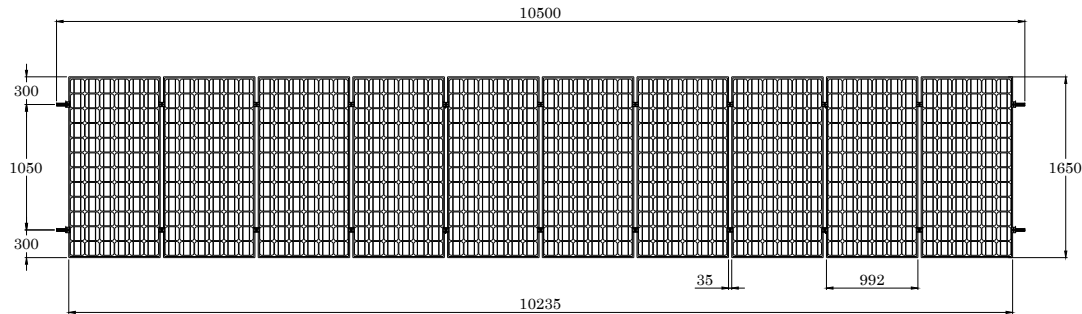
DETALLE A
Soporte Tipo L



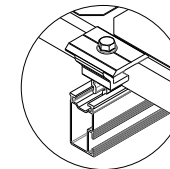
Terminal de
Conexión a Tierra



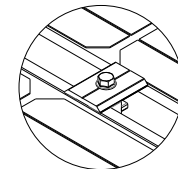
VISTA ISOMÉTRICA



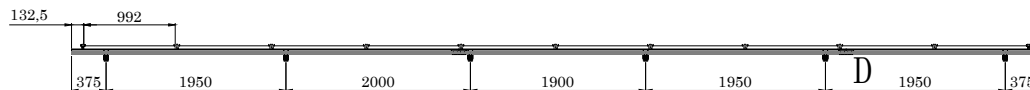
VISTA PLANTA



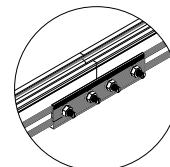
DETALLE B
Abrazadera Universal
(Modo Remate)



DETALLE C
Abrazadera Universal
(Modo Intermedio)



VISTA FRONTAL



DETALLE D
Empalme de Riel

# Parte	Descripción	Cantidad
NXT-R-2100-MILL	Perfil NextRail 2.1m, mill finish, Aluminio 6105-T6	2
NXT-R-4200-MILL	Perfil NextRail 4.2m, mill finish, Aluminio 6105-T6	4
NXT-SL-2	2 Soporte L de 105mm para Next-Rail	6
NXT-ER-2	2 Empalmes de riel con puesta a tierra, para Next-Rail	2
NXT-AU-2	2 Abrazadera universal p/panel con marco de 25-40mm	11
NXT-TCT-1	1 Terminal de conexión a tierra para Next-Rail	1
NXT-PCT-4	4 Placas de conexión final a tierra (panel-riel)	1
NXT-CP-5	5 Clips de Plástico para 2 cables, Next-Rail	5

observaciones		 Aluminio que transforma	
MATERIAL:		N° DE DIBUJO	NXT-SMP-10-60
FECHA:	25/06/2018		
ACOT:	mm [in]		A3
PESO:		ESCALA NA	H041 DE 1